

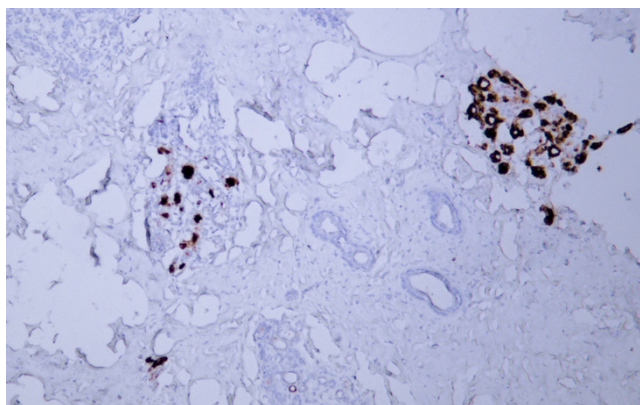


GCDFP-15 (ABT175) Mouse mAb

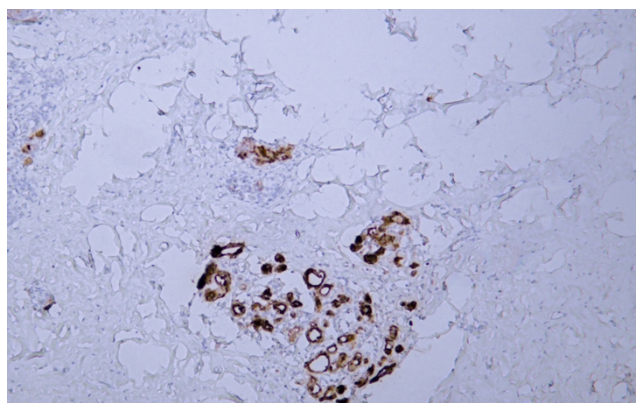
Catalog No	YP-Ab-15702
Isotype	IgG
Reactivity	Human
Applications	IHC
Gene Name	PIP GCDFP15 GPIP4
Protein Name	BRST-2;BRST2;GCDFP-15;GCDGP15;gp17;GPIP4;Gross cystic disease fluid protein 15;PIP;PIP_HUMAN;Prolactin induced protein;Prolactin inducible protein precursor;Prolactin-induced protein;Prolactin-inducib
Immunogen	Synthesized peptide derived from human GCDFP-15
Specificity	The antibody can specifically recognize human GCDFP-15 protein.
Formulation	PBS, pH7.2, 0.03% Porcolin 300, containing stabilizing protein
Source	Mouse, Monoclonal/IgG1, Kappa
Purification	The antibody was affinity-purified from mouse ascites by affinity-chromatography using specific immunogen.
Dilution	IHC-p 1:200-400,
Concentration	1 mg/ml
Purity	≥90%
Storage Stability	-20°C/1 year
Synonyms	BRST-2;BRST2;GCDFP-15;GCDGP15;gp17;GPIP4;Gross cystic disease fluid protein 15;PIP;PIP_HUMAN;Prolactin induced protein;Prolactin inducible protein precursor;Prolactin-induced protein;Prolactin-inducible protein;SABP;Secretory actin binding protein;Secretory actin-binding protein
Observed Band	
Cell Pathway	Cytoplasmic
Tissue Specificity	Breast
Function	induction:By prolactin and androgen; inhibited by estrogen.,similarity:Belongs to the PIP family.,subunit:Monomer. Interacts with AZGP1.,tissue specificity:Expressed in pathological conditions of the mammary gland and in several exocrine tissues, such as the lacrimal, salivary, and sweat glands.,
Background	
matters needing attention	Avoid repeated freezing and thawing!

Usage suggestions

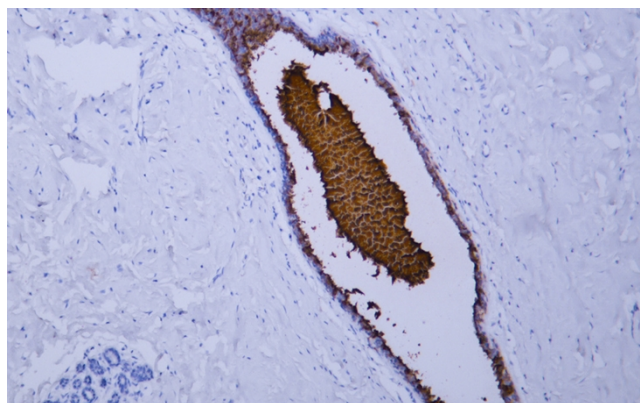
This product can be used in immunological reaction related experiments. For more information, please consult technical personnel.

Products Images

Human breast tissue was stained with Anti-GCDFP-15 (ABT175) Antibody



Human breast tissue was stained with Anti-GCDFP-15 (ABT175) Antibody



Human breast carcinoma tissue was stained with Anti-GCDFP-15 (ABT175) Antibody